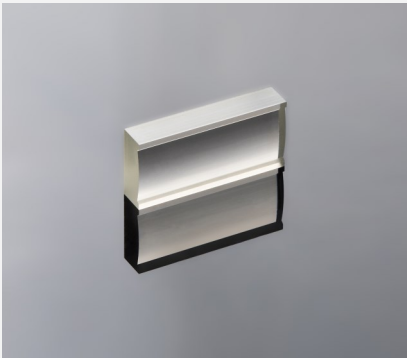


Slow Axis Collimator



Features and Advantages

Acylindrical lens for the collimation of the slow axis of diode lasers.

Product Specifications

| Product Code | ZLE000104 ⁽¹⁾ | |
|---|--------------------------|-------------------------------------|
| Specification Data | Unit | Value |
| Material | | S-TIH53 (Ohara) |
| Length (L) | mm | 15.0 ± 0.05 |
| Width (W) | mm | 7.0 ± 0.05 |
| Thickness (Te) | | 2.81 ± 0.05 |
| Clear Aperture (A _l x A _w) | mm ² | 12.0 x 3.0 |
| Refractive Index n @ 808 nm | | 1.823 |
| Effective focal length EFL @ 808 nm | mm | 14.22 (radius 11.7 ± 0.5) |
| Back focal length BFL @ 808 nm | mm | 12.68 |
| NA | | < 0.2 |
| Standard Coating - AR | nm | 790 - 990 |
| Transmission | % | > 99 |
| Surface imperfections (DIN ISO 10110-7) | | 5/ 5×0.063; C4×0.25; L4×0.063; E0.5 |

⁽¹⁾ Example for customization – design, dimensions, coatings & bottom tabs for mounting on request.

Product Drawing (mm)

